



# Cacti

Cédric TEMPLE

Responsable du Pôle Supervision

# Sommaire

---

- Description de Cacti
- Avantages de Cacti
- Exemple d'utilisation
- Inconvénients de Cacti

# Description de Cacti

---

- Métrologie du réseau
  - Tracer de graphiques
- Utilise SNMP et RRDTOOL
- Possibilité d'établir ses propres vues
- Fortement basé sur l'idée de templates
- Données dans des fichiers RRD
- Configuration complète depuis l'interface
- Contrôle d'accès

# Avantages de Cacti

---

- Notion de template
  - Tout est « template »
- Graphiques complètement paramétrables
  - Couleur, type d'affichage, valeurs affichées
- Auto découverte dirigée
  - Partitions, interfaces réseaux, ...
- Très forte communauté
- Nombreux plugins
  - Pour remonter des éléments
  - Pour ajouter des fonctionnalités

# Ajouter un nouveau serveur

- Create
- New Graphs
- Management
- Graph Management
- Graph Trees
- Data Sources
- Devices**
- Connection Methods
- Data Queries
- Data Input Methods

**Devices** Add

Filter by host template:  Search:  go clear

<< Previous						Showing Rows 1 to 2 of 2 [1]	Next >>
Description	Status	Hostname	Current (ms)	Average (ms)	Availability		
GuillaumePC	Up	192.168.0.176	84.41	164.18	66.67%	<input type="checkbox"/>	
Localhost	Up	127.0.0.1	9.92	140.82	80.58%	<input type="checkbox"/>	

<< Previous
Showing Rows 1 to 2 of 2 [1] Next >>

↳
Choose an action:  go

# Entrer les paramètres

## Devices [new]

### Description

Give this host a meaningful description.

### Hostname

Fill in the fully qualified hostname for this device.

### Host Template

Choose what type of host, host template this is. The host template will govern what kinds of data should be gathered from this type of host.

### Disable Host

Check this box to disable all checks for this host.

 Disable Host

## SNMP Options

### SNMP Community

Fill in the SNMP read community for this device.

### SNMP Version

Choose the SNMP version for this host.

### SNMP Port

Enter the UDP port number to use for SNMP (default is 161).

### SNMP Timeout

The maximum number of milliseconds Cacti will wait for an SNMP response (does not work with php-snmp support).

# Auto-détection des éléments

**New Graphs**

Graph Management

Graph Trees

Data Sources

Devices

Collection Methods

Data Queries

Data Input Methods

Templates

Graph Templates

Host Templates

Data Templates

Import/Export

Import Templates

Export Templates

Configuration

Settings

Utilities

System Utilities

User Management

Logout User

monpc (127.0.0.1)

ucd/net SNMP Host

Create new graphs for the following host:

[\\*Edit this Host](#)

[\\*Create New Host](#)

monpc (127.0.0.1)

## Graph Templates

Graph Template Name

Create: ucd/net - CPU Usage

Create: ucd/net - Load Average

Create: ucd/net - Memory Usage

Create: (Select a graph type to create)

## Data Query [SNMP - Interface Statistics]

Index	Status	Description	Type	Speed	Hardware Address	IP Address	
1	Up	lo	softwareLoopback(24)	10000000		127.0.0.1	<input checked="" type="checkbox"/>
2	Up	eth0	ethernetCsmacd(6)	100000000	00:00:02:3F:63:E1:09	192.168.0.136	<input checked="" type="checkbox"/>



Select a graph type: In/Out Bits

## Data Query [ucd/net - Get Monitored Partitions]

Index	Mount Point	Device Name	
1	/	/dev/hda5	<input checked="" type="checkbox"/>
2	/usr	/dev/hda6	<input checked="" type="checkbox"/>
3	/home	/dev/hda9	<input checked="" type="checkbox"/>

# Ajout du Serveur à l'arbre

Create

New Graphs

Management

Graph Management

**Graph Trees**

Data Sources

Devices

Collection Methods

Data Queries

Data Input Methods

Templates

Graph Templates

Host Templates

Data Templates

**Graph Trees** [edit: Default Tree]

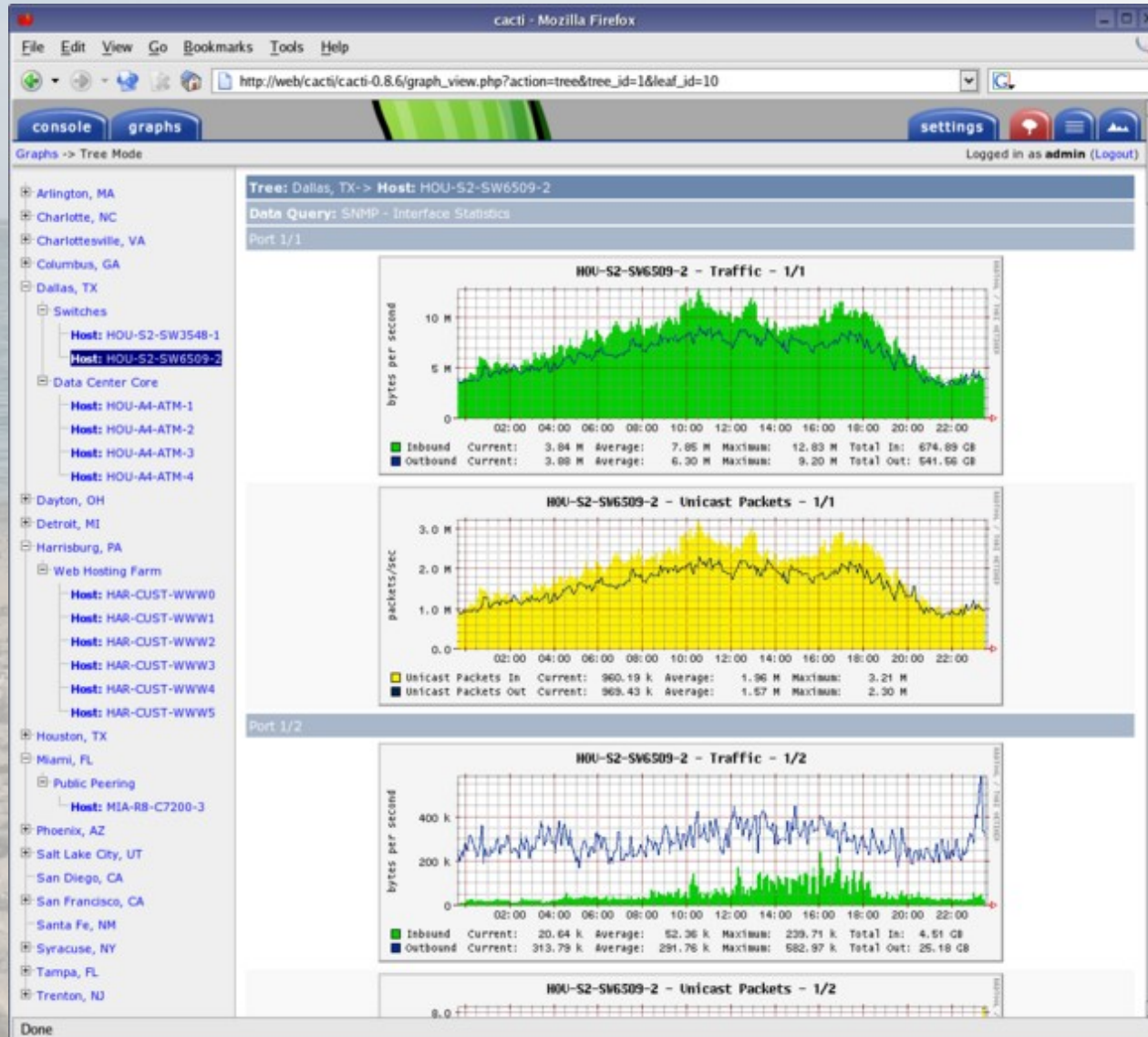
**Name**  
A useful name for this graph tree.

**Sorting Type**  
Choose how items in this tree will be sorted.

Tree Items		<b>Add</b>
Item	Value	
<b>Host:</b> Localhost (127.0.0.1)	Host	✘
<b>Partitions</b> (Add)	Heading	✘
Localhost - Disk Space - /dev/hda1	Graph	✘
Localhost - Disk Space - /dev/hda5	Graph	✘
<b>CPU</b> (Add)	Heading	✘
Localhost - Load Average	Graph	✘
<b>Host:</b> GuillaumePC (192.168.0.176)	Host	✘



# Visualisation



# Inconvénients de Cacti

---

- « Ticket d'entrée » important :
  - Notion de template rebute certains utilisateurs
  - Ajout de nouveaux indicateurs complexe
  - Documentation peu évidente
- Couplage avec Nagios faible :
  - Double polling et/ou double configuration
  - Pas de vrai solution
  - Peut être « Nagios Plugin for Cacti 2 »?
- Données en base RRD
  - Interrogation avec les outils de « Business Intelligence »?
  - Sauvegardes?



PARIS - TOULOUSE - LYON



OPENSOURCE  
solutions  
LINUX



Merci de votre attention

[contact@linagora.com](mailto:contact@linagora.com)

